



**27.**

**INTERNATIONAL CONFERENCE  
ON RECYCLING OF PLASTICS**

24 - 25 June 2025 | Dresden



# Polish recycling

- market and legal differences  
on the example of the Polish plant  
of the Van Werven Group

Simon Kaczmarczyk  
Van Werven Poland sp z o.o.



Founded in 1945

# Van Werven Business Units



Infrastructure

Waste collection  
& recycling

Agriculture

Plastic  
Recycling

# Locations



Selby



Kolding



Sexdrega



Biddinghuizen



Lanaken



Gromadka

# What do we process



mix plastics  
and PP-HDPE mixes



PP buckets



HDPE Cans



HDPE Bottles



PP Packaging



plastic pallets



wheelie bins



PP bumpers



crates



pipes

and more...

# Origin of waste

Municipalities



Municipalities



Building construction  
and demolition waste



Other



**180 000 tons**

# Our process

Plastic Recycling Industry

Plastic waste

Pre-Sorting

Shreddering

Washing

Grinding

Sorting



1  
8

2  
3

7  
6

4  
5

# Main products

PP  
HDPE  
PS  
PS/ABS  
PVC

 van werven





# Facts

All our regrinds are washed, dried, dedusted, after several sorting and separation processes like optic, metal or water separation

All our regrinds are certified by Recyclclass as 100% PCR

We've got own labs located on factories for check and control of the every load's quality

# Maturity of markets

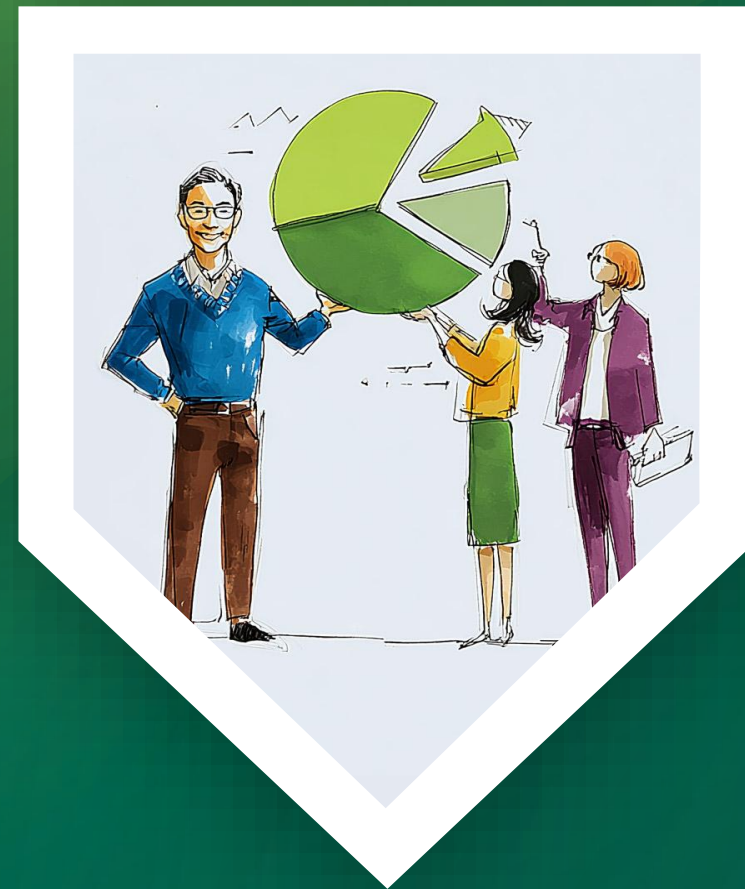


Infrastructure

# Maturity of markets



Infrastructure

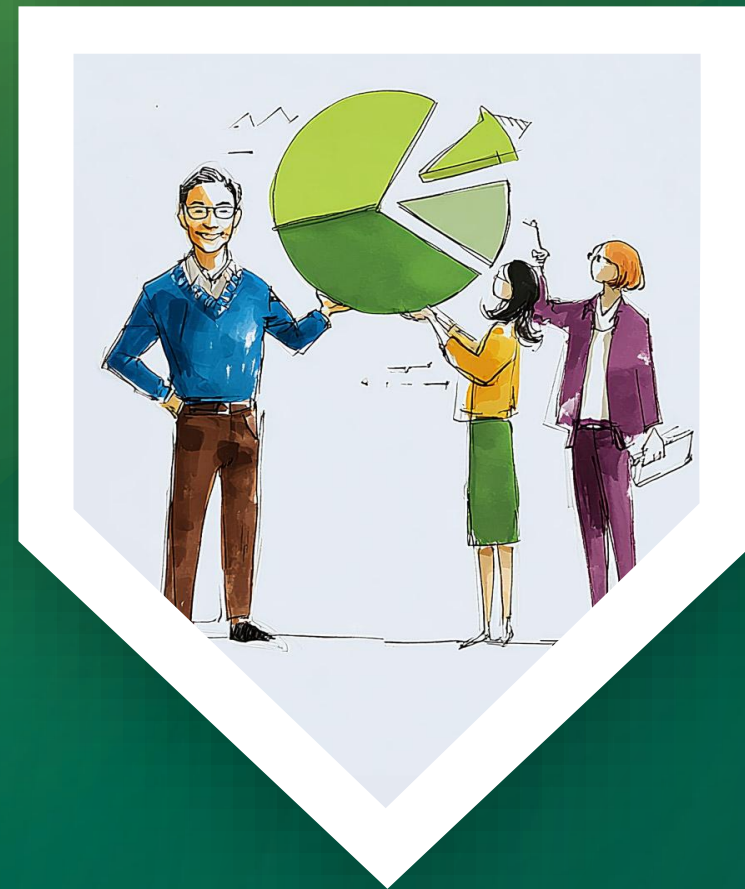


Market  
Concentration

# Maturity of markets



Infrastructure



Market  
Concentration



Extended  
Producers  
Responsibility

# Maturity of markets



Infrastructure



Market  
Concentration



Extended  
Producers  
Responsibility



Standardization

# Legal issues

Interpretation



Example: cross-border transport of waste

Implementation

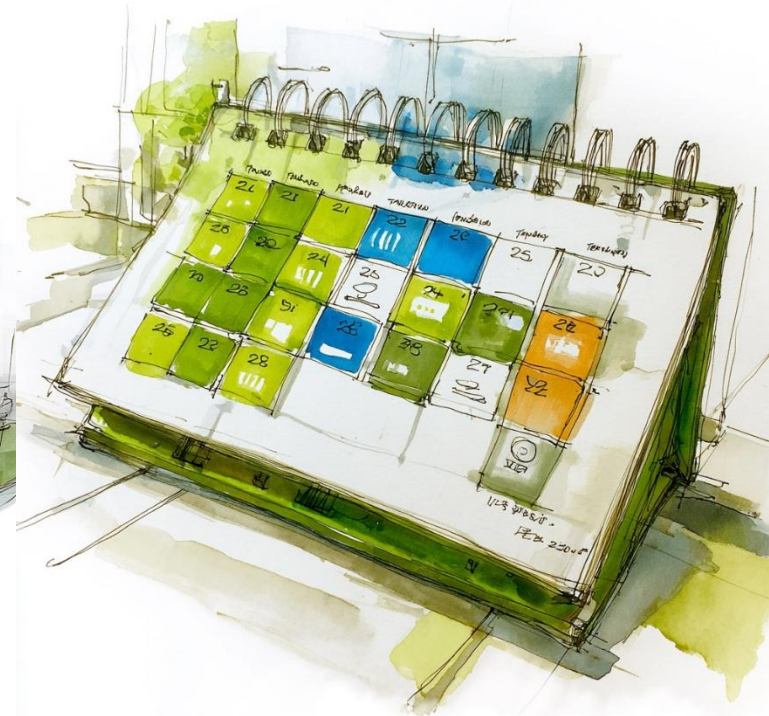


Example: residues from recycling

# More restrictive law in Poland



Stricter Law



Long Waiting  
Time



BDO



SENT



Controls

# Thank you

Simon Kaczmarczyk

m: +48 604 741 815

e: [s.kaczmarczyk@vanwerven.pl](mailto:s.kaczmarczyk@vanwerven.pl)

